

REC

Consulting Engineers,
Architects & Planners



General Description

REC

REC, Lahore is one of Pakistan's leading firms of Consulting Engineers, Architects & Planners providing comprehensive engineering, architectural and planning services to the private and public sectors in Pakistan and abroad.

Established in 1961, REC has grown into a multi-disciplined engineering consultancy with a professional staff of over 150. Projects handled to date have cost over US\$ 10 billion.

Management

Chief Executive

Pir Farid Ahsanuddin

B.Sc. (Civil Engg.) With Distinction Washington State University
M.Sc. (Civil Engg.) University of Wisconsin
M. ASCE, M. ACI, M.I.E. (Pakistan)

Directors:

Faisal Ali Asghar

B.Sc. (Civil Engg.) Ohio State University, USA.
MBA (LUMS)

Pir Saad Ahsanuddin

B.Sc.(Civil Engg.) with Honors,Brown University, USA
B.S. (Business, Economics) with
Honors, Brown University, USA
MBA (Harvard University) USA.

Projects of National Importance

Highways

Design of Lahore - Islamabad Motorway (M-2) - 350 Km
Design of Karachi - Hyderabad Super Highway (Additional Carriageway) - 135 Km
Design of Lahore - Faisalabad Motorway - 100 Km
Design and Supervision of Naran - Jhalkhad - Chilas Highway (N-15) - 130 Km
Design and Construction Supervision of Kharian - Rawalpindi Additional Carriageway (N-5) - 125 Km
Design and Construction Supervision of Indus Highway (N55) Shori Nullah to Rajanpur (96 Km)
Construction Supervision of Indus Highway (N-55) D.G. Khan to Retra Junction (108 Km)
Construction Supervision of Makran Coastal Highway, Liari - Ormara Section (250 Km)
Construction Supervision of Gwadar to Hoshab Highway (M - 8) - 250 Km
Construction Supervision of Indus Highway (N-55), D.G. Khan - Rajanpur Section - 106 Km
Design Review and Construction Supervision of Gawadar to Khuzdar Road Project (193 Km) (Three Section).
Design Review and Construction Supervision of Flyover at Khiali Chowk, N-5, Gujranwala.
Design Review and Construction Supervision of Nishtar Ghat Benazir Bhutto Shaheed Bridge over River Indus.
Design Review and Construction Supervision of Hiran Minar Interchange on M-2.
Design Review and Construction Supervision of Bridge over River Chenab Connecting Shorkot to Garh Maharaja.

Buildings

- 20 Storey OGDC House, Blue Area Islamabad
- National Hockey Stadium, Lahore
- Alhamra Arts Council Hall No. 1, Lahore
- 13 Storey LDA Plaza, Lahore
- 11 Storey State Life Building, Peshawar
- 10 Storey PIA Town Terminal Building, Lahore
- NRIFC Building, Karachi for USAID
- Grain Storage Silos and Conveyance System at Multan, Chichawatni & Khairpur
- Fauji Foundation Teaching Hospital, Rawalpindi
- Foundation University Medical College, Rawalpindi
- 9 Storey SAF Centre Lahore
- Football House for FIFA, Lahore
- Environmental Law College, Punjab University, Lahore
- Additional Academic Block, Punjab University, Lhr.
- POF WAH Medical College, WAH Cantt
- Suleman Dawood School of Business at LUMS, Lahore
- Rescue 1122 Emergency Services Academy, Lahore
- Library Complex, Pepsi Dinning and Office Building, Student Hostel Building, Faculty Accommodation Building, Campus Mosque, Library Complex etc. At LUMS, Lahore
- Law College at LUMS, Lahore.
- Extension of D.G.Khan Cement Factory
- Punjab Sugar Mills at Mian Channu
- Pasrur Sugar Mills and Pattoki Sugar Mills
- Cinepax Multiplex at Jinnah Park, Rawalpindi
- Rice Mills for Punjab Industrial Development Board
- Extension Nishat Textile Mills
- Pakistan School of Fashion Design, Lahore
- Lahore City Center, DHA, Lahore
- Fortress Square Mall, Fortress Stadium, Lahore Cantt

Traffic/Transportation

Motorways
 Highways
 Rural Access Roads
 Farm to Market Roads
 City Roads
 Bridges
 Overhead/Underpass Crossing
 Drainage Structures
 Retaining Structures



Architecture/Buildings

Multistorey Offices
 Sugar Mills, Textile Mills
 Chemical Plants
 Cement Plants
 Silos/Storage Godowns
 Stadiums
 Theatres / Auditoriums
 Educational Institutions



Water Resources

Irrigation Schemes
 Hydropower Development
 Surface Drainage
 Salinity Control
 Land Reclamation
 Hydrology
 Hydraulics



Infrastructure Development/ Environment Engineering

Sewerage System
Water Supply Scheme
Pumping Stations
Overhead Water Tanks
Under Ground Water Tanks
Waste Water Treatment Plant
Master Planning Housing Schemes



Electrical/Mechanical

Heating
Ventilation
Air Conditioning
Vertical Transportation
Standby Power
Substations
Load Despatch Centers



Fields of Specialisation

- Highway Engineering
- Transportation & Traffic Engineering
- Structural Engineering
- Architecture
- Irrigation Engineering
- Environmental Engineering & Waste Treatment System.
- Water Supply, Sewerage and Drainage Systems.
- Electrical and Mechanical Engineering
- Geotechnical Engineering
- Hydraulic Engineering
- Hydrology

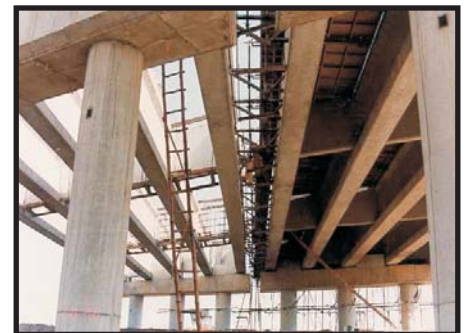
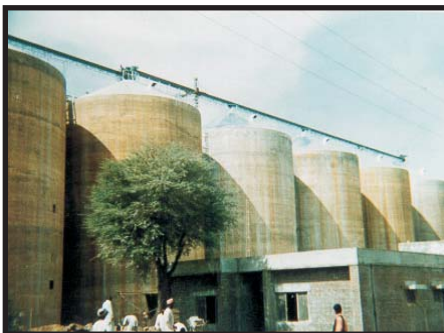
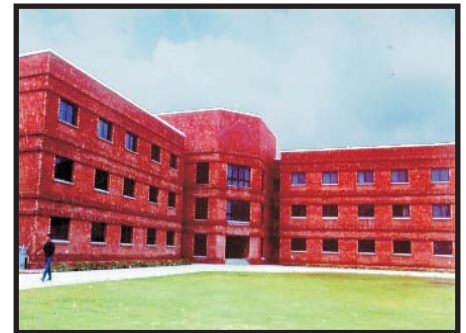
Activities

A blend of professional disciplines combining the technology of the engineers, the vision of the planner and the appraisal of the economists, provides an integrated approach to find optimum solutions to problems. Emphasis on efficient management of each project from planning through design, construction and start up assures the Client of satisfactory completion of work and commissioning of the project on schedule and within budget. The firm aims at finding the most economical solution through the use of latest and sophisticated design techniques and makes extensive use of computer for the optimization of highway alignment designs, analysis of bridges, shell roofs and other structures, preparation of bill of quantities, water supply network and distribution analysis etc. Services of specialists and foreign associates in different fields of engineering, planning and economics are available for supplementing the firm's expertise on complex problems or special projects.

Scope of Work

- a) Investigation and Planning:**
 - Site Investigation & Surveys
 - Feasibility Studies
 - Master Planning
 - Economic Appraisals
 - Soil Investigations
- b) Detailed Designs:**
 - Structural & Architectural Designs
 - Services Design & Drawings
 - Cost Analysis
 - Cost Planning & Control
 - Specifications
- c) Tender Documents:**
 - Bid Analysis and Adjudication
 - Contract Documents
 - Bill of Quantities
 - Prequalification of Bidders
- d) Supervision of Construction:**
 - Top Supervision
 - Detailed Supervision

REPUBLIC ENGINEERING CORPORATION (Pvt) Ltd.



Head Office

1st Floor, PAAF Building,
7/D Kashmir Egerton Road,
Lahore-54000, Pakistan.
Phone: (92-42) 36360180-3, 36375512-13
Fax : (92-42) 36369655, 36375514
E-Mail: info@rec.com.pk
recheadoffice@gmail.com
Website: www.rec.com.pk

Sub-Offices

1. 42/C, Block-VI, PECHS, Karachi-76350, Pakistan
Phone: (92-21) 34524675, 34550221
Fax : (92-21) 34550221
2. House 284, Street 14, F-10/2
Islamabad, Pakistan.
Phone: (92-51) 32105164, 32105184



QUALITY ASSURANCE

REC has been certified in 2007 by DET NORSKE VERITAS (DNV) to meet the International quality assurance standards according to ISO 9001:2000

STAFF

A permanent staff of approximately 300 cover the following specialized fields:

- Civil engineering, architecture, structural engineering
- Tunnelling, engineering geology, geotechnics
- Traffic engineering
- Hydraulic engineering, water supply, hydraulic calculations
- Waste water engineering, environmental protection
- Industrial engineering, pipeline engineering
- Process engineering
- Petroleum engineering
- Electrical engineering
- Industrial electronics, communications
- Information technology
- Economic engineering
- Environmental impact assessment

REC keeps up contacts with external experts and scientists who can be mobilized at short notice to assist in the most difficult jobs with their specialized knowledge. Thanks to its wide range of internal resources and multi-sectoral expertise, the company can carry out overall project planning and development, thereby offering its clients the advantage of complete in-house services.

COMPUTER

HARDWARE

For reasons of economy, projects are increasingly subject to optimisation efforts and to faster implementation. To achieve these objectives REC uses the latest in computer equipment for the development of the projects.

REC's in-house computer system comprises the following components, which are continually being supplemented as required:

- High performance computers for Finite Element and optimisation computations
- Work stations for CAD and graphics applications
- PC for individual user programs
- Digitisers, printers, plotters

All components are integrated in a computer network and can be used to exchange data and information quickly. REC can also communicate with any external computer system anywhere in the world.

SOFTWARE

Obviously, a modern hardware system must be equipped with suitable computer programs. REC therefore uses the latest software available on the market, with particular regard to the fields of:

- Engineering
- Economic studies and system optimisation
- Project management and project control

As REC sets the highest quality standards for itself, the company has developed its own software for special applications in statics and pipeline hydraulics, as well as for geographical information systems.

In addition, REC's services include the development of computer software for SCADA systems.